

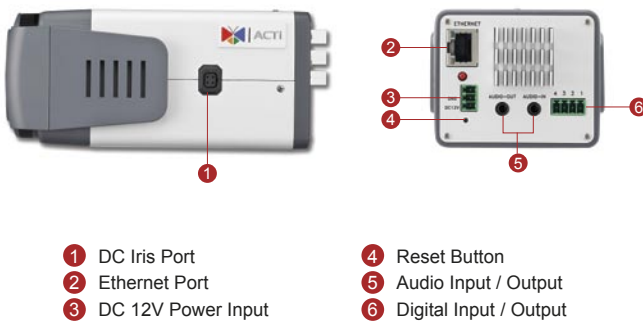
TCM-5311

H.264 Megapixel IP D/N PoE
CCD Box Camera

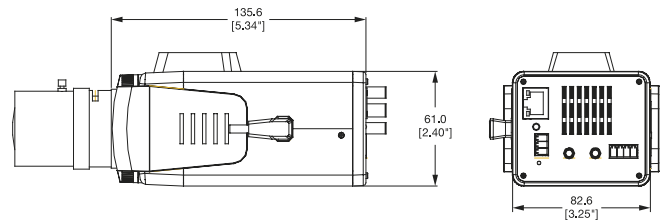


- 1/3" Sony EXview HAD Progressive Scan CCD
- Day and night function with mechanical IR cut filter
- Minimum illumination 0.05 lux at F1.2
- DC iris lens supported
- 15 fps at 1280 x 960 resolution
- Selectable H.264, MPEG-4 SP, MJPEG compressions with dual streaming
- Two-way audio
- Video motion detection
- Digital input and digital output
- Powered by PoE Class 3 / DC 12V

PHOTO INDICATION



DIMENSION DIAGRAM



Unit: mm [inch]

ACCESSORY OPTIONS

Lens		
PLEN-0203		IR Compatible, DC Iris, F1.3, 2.8 mm - 12 mm, 105.5° - 24.2°
PLEN-0205		IR Compatible, DC Iris, F1.6, 8 mm - 80 mm, 34.4° - 3.7°

Outdoor Housing & Bracket		
PMAX-0200		IP66, with heater and fan powered by 110V AC, -30 °C ~ 50 °C (-22 °F ~ 122 °F), requires housing bracket
PMAX-0201		IP66, with heater and fan powered by 220V AC, -30 °C ~ 50 °C (-22 °F ~ 122 °F), requires housing bracket
PMAX-1101		Aluminum, max. load 10 kg (22.05 lb), tilt angle 90° (For PMAX-0200, PMAX-0201, PMAX-0202)

Camera Bracket		
PMAX-1100		Plastic, max. load 3.5 kg (7.72 lb), tilt angle 90°

PRODUCT SPECIFICATION**TCM-5311****• Device**

Device Type	Box Camera
Image Sensor	Sony EXview HAD Progressive Scan CCD
Sensor Size	1/3" (4.8 x 3.6 mm)
Horizontal Resolution	900 TVL
Day / Night	Yes
Minimum Illumination	Color: 0.15 lux at F1.2 (30 IRE, Max. AGC); B/W: 0.05 lux at F1.2 (30 IRE, Max. AGC)
Color to B/W switch	DSP based switch, configurable
Mechanical IR Cut Filter	Yes
IR Sensitivity Range	700 - 1100 nm
Electronic Shutter	1/60 - 1/10,000 sec (60Hz); 1/50 - 1/10,000 sec (50Hz) (manual mode) 2 - 1/100,000 sec (auto mode)

• Lens

Mount Type	C/CS mount (interchangeable lens)
Lens Option	Compatible lenses are available

• Video

Compression	H.264, MPEG-4 SP, MJPEG
Maximum Frame Rate vs. Resolution	15 fps at 1280 x 960; 30 fps at 1280 x 720 (HD 720p); 30 fps at 640 x 480 (VGA); 30 fps at 320 x 240 (QVGA); 30 fps at 160 x 112 (QQVGA)
Multi-Streaming	Simultaneous dual streams based on two configurations
Bit Rate	28 Kbps - 6 Mbps (per stream)
Bit Rate Mode	Constant, Variable
S/N Ratio	More than 50 dB
Image Enhancement	Backlight compensation; White balance: automatic, predefined, manual; Brightness; Automatic gain control; Auto exposure: automatic, predefined, manual; Flickerless
Privacy Mask	4 configurable regions
Text Overlay	User defined text on video
Image Orientation	Image flip and mirror

• Audio

Compression	8 kHz, Mono, PCM, 16 bit encoding
Audio-In	3.5mm Phone Jack
Audio-Out	3.5mm Phone Jack

• Network

Protocol & Service	TCP, UDP, HTTP, HTTPS, DHCP, PPPoE, RTP, RTSP, IPv6, DNS, DDNS, NTP, ICMP, ARP, IGMP, SMTP, FTP, UPnP, SNMP, Bonjour
Ethernet Port	1, Ethernet (10/100 Base-T), RJ-45 connector
Security	IP address filtering; HTTPS encryption; Password protected user levels

• Alarm

Alarm Trigger	Video motion detection (3 regions); External device through digital input
Alarm Response	Notify control center; Change camera settings; Command other devices; E-mail notification with snapshots; Upload video, snapshot to FTP server; Activate external device through digital output

• Interface

DC Iris Connector	External connector for DC iris lens
Digital Input	1, TTL, terminal block
Digital Output	1, TTL, terminal block

• General

Power Source / Consumption	PoE Class 3 (IEEE802.3af) / 7.68 W DC 12V / 6.72 W
Weight	505 g (1.1 lb)
Dimensions (W x H x D)	135.6 mm x 82.6 mm x 61.0 mm (5.34" x 3.25" x 2.40")
Operating Temperature	-10 °C ~ 50 °C (14 °F ~ 122 °F)
Approvals	CE, FCC

• Integration

Unified Solution	Fully compatible with ACTi software
ISV Integration	Software Development Kit (SDK) available
Firmware Access Browser	Microsoft Internet Explorer 6.0 or newer

* All specifications are subject to change without notice.

* All brand names and registered trademarks are the property of their respective owners.

www.acti.com

