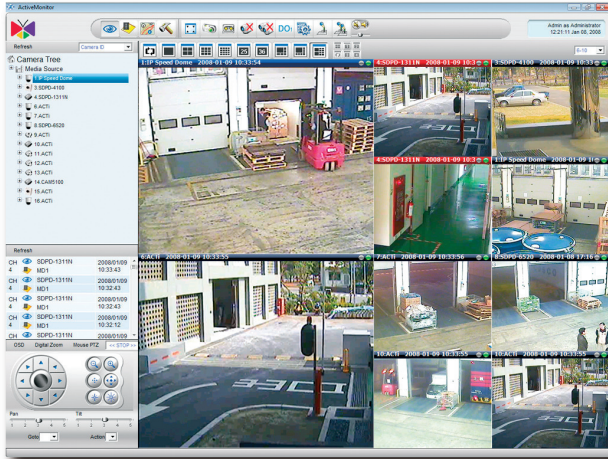




# ACTi NVR v2.2

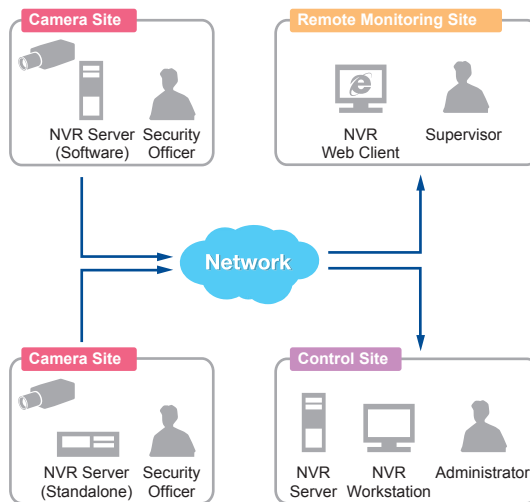
ACTi NVR v2.2



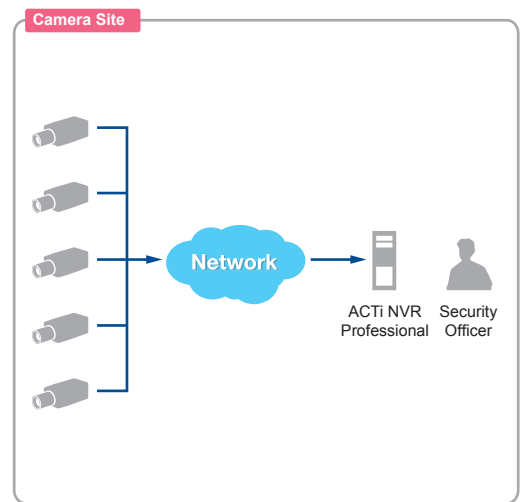
- Support for multiple sites surveillance (available with Enterprise version only)
- Manage up to 64 cameras with tree-directory display
- Support 1, 4, 6, 8, 9, 10, 16, 25, 36, 49, 64 window layout
- Support Megapixel MPEG-4 / H.264 / MJPEG format
- Customizable logo and user interface
- Multiple-channel live view and playback in full-screen mode
- Support different frame rate on live view and recording
- Digital zoom on live view and playback
- Continuous, Schedule, Motion, Alarm Recording
- Support motion detection and Digital I/O event from hardware
- Maximum 30 seconds pre-event recording
- Expandable PTZ commands
- Search video clips by date, time and event
- Time-based search bar
- 4-channel synchronized playback
- eMap Manager
- NVR Web Client (available with Enterprise version only) and NVR Workstation

## SOLUTION TEMPLATE

### NVR Enterprise

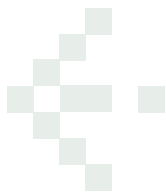


### NVR Professional



## BUNDLED APPLICATION

Management Utility	
	IP Utility   Search, manage devices, upgrade firmware, backup/restore configuration
	Snapshot Utility   Create snapshots in JPEG with resized resolution and send via Mail or FTP
	Archive Player   Archive playing tool with playback panel and snapshot functions
	Media Converter   Converts recorded archives to AVI files
	Backup Wizard   Backup and restore configuration on NVR and CMS
Remote Utility	
	Streaming Explorer   Web tool to manage devices remotely, comes with PTZ configuration tool
Trouble-Shooting Utility	
	Camera Doctor   Device diagnosis and firmware debug tool
	AP Doctor   NVR diagnosis and application debug tool



## PRODUCT SPECIFICATION

		NVR Enterprise	NVR Professional
System Requirements	PC Specification	16 Channel: Intel Core 2 Duo 2.4GHz, 4 GB Memory, 250 GB HDD, Gigabit Ethernet 32 Channel: Intel Core 2 Duo 2.67GHz, 4 GB Memory, 250 GB HDD, Gigabit Ethernet 48 Channel: Intel Core 2 Quad 2.67GHz, 4 GB Memory, 250 GB HDD, Gigabit Ethernet 64 Channel: Intel Core 2 Quad 2.67GHz, 4 GB Memory, 250 GB HDD, Gigabit Ethernet	
	Graphic Card	ATI Radeon 1950, nVidia GeForce 9500GT	
	Operating System	Windows XP Professional, Windows 2003, WSS 2003, Windows Vista (Business, Enterprise and Ultimate Edition), Windows 2008 Server Enterprise	
System	Browser	Microsoft Internet Explorer v7.0, v8.0	N/A
	Format	MPEG-4/H.264/MJPEG	
	Resolution	Megapixel/D1/CIF/QCIF	
	Free License	16	64
	Max. Number of Camera	64	
	CMS support*	Support ACTi CMS	N/A
Live view	Window Layout	1, 4, 6, 8, 9, 10, 16, 25, 36,49,64	
	Manual Record & Snapshot	Manual record on-the-fly and saved in NVR Server. The manual record file can be searched later on.	
	Tree Display Panel	User may drag-n-drop to drag a video source to the layout manager for preview	
	Create Snapshots	Creates snapshot images and can be searched as an event index later on	
	Digital Zoom	User may zoom in/out the video display with mouse scroll wheel	
	Patrol Mode	Switches and displays each preview window accordingly. Pre-defined layout can be set to patrol mode as well	
	2-way Audio	Supports 2-way audio. User may have 1-to-1 talk or 1-to-many audio broadcast to multiple devices at the same time.	
	Layout Manager	Setup pre-defined window layout to group certain cameras in the same layout. Layout manager can be displayed in full-screen mode.	
	Instant Playback*	Instant playback when user want to display recorded video in the live view channel	
Recording	Schedule Recording	Record video with user-defined schedule	
	Event Recording	Record video when a digital input event is triggered or motion detected	
	Pre-event Recording	User-defined time period to record before a certain event occurs.	
	Manual Record	Manual record on-the-fly and record to NVR	
	Post-event Recording	User-defined time period to record after a certain event occurs.	
Playback	Playback Mode	Play, Pause, Stop, Fast Forward, Fast Rewind, Play Backward, Play frame by frame, 1/2/4/8x Speed Control, up to 200X speed control	
	Synchronized Playback	4-channel synchronized playback at the same time	
	Create Snapshots	Creates snapshot images and can be searched as an event index later on	
	Digital Zoom	User may zoom in/out the video display with mouse scroll wheel	
	Export Video	Exports a period of video clips into one AVI file	
Search	Time Sequence Search	Search video clips by date, time, or channel	
	Event Search	Search motion detection, digital input, snapshot event by date, time, channel	
	Time-based Search Bar	The recording and events are displayed with a time-bar, user may click on the bar to start playing the recorded archive	
	Status Event Search	Search events on video loss / recovery, network disconnect / reconnect, user login / logout, database log with specified date, time, channel, user and login IP	
	Snapshot Viewer	Display snapshots in thumbnail view; user may browse the snapshots then click it to start playback video clip at that time stamp.	
PTZ Control	PTZ Management	Manages pan, tilt, zoom operation with speed control	
	Protocol Supported	Pelco-P, Pelco-D, Lilin, Dynacolor, Samsung, Kampro, Sony VISCA, Panasonic protocol supported	
	Preset Position	Goto, set, clear preset positions and patrol on preset positions	
	USB Joystick on PC	Connects joystick on the PC via USB port to control speed dome directly	N/A
Event Handling	Event Types	Handles motion detection, alarm, video loss, network disconnection events	
	Trigger Digital Output	Triggers digital output when certain events (digital I/O or motion detection) occur	
	Hot-Spot Window	Activates and switches the channel with event to the hot-spot window. The original video in the hot-spot window will then be switched over.	
	Pop-up Window	Mini-preview window will be pop-up when event occurs. Pop-up window will be dismissed when user-defined dwell time elapsed or security operator click on the "Dismiss" button.	
	E-Mail/FTP Notification	E-Mail/FTP notification with captured snapshot	
	Play audio file	Plays user-defined audio file or beep on the machine	
	Goto PTZ Preset	When event occurs, it requests the speed dome to go to certain PTZ preset position	
	Execute Command	User-defined execution command will be executed.	
e-Map	eMap Manager	eMap configuration and management	
	eMap Monitor	Creates alarm when an event occurs on a certain camera in eMap	
	eMap Tour	Maps can be patrolled and displayed one by one with user-defined dwell time.	
Web Client Function	Remote Preview	Preview via Web browser	N/A
	Remote Playback	Search and playback via Web browser	N/A
	Remote Search	Search certain events via Web browser	N/A
	Remote Map	View map via web browser	N/A
Permission Control	Auto Login	Auto login and load the first preview layout	
	Multi-level Permission	Administrator, Standard User, Guest levels. User may add new User Group for advanced permission control	
	Camera Group Permission	Setup Camera Group permission for different	
	eMap Permission	Setup eMap permission for different users.	

\* The features will be implemented in later released bundled application

\* All specifications are subject to change without notice.  
\* All brand names and registered trademarks are the property of their respective owners.